

HIST 3970: Modern China

The China War (2nd Sino-Japanese War), 1937-45, v. 12/1/14

I. JAPANESE AGGRESSIONS IN CHINA

A. Japanese Aggressions in China

- Japanese control of the Liaodong Peninsula (1905)
- Japanese control of Korea (1910) and Taiwan (1895)



Guandong Army (GA)

- The Guandong (Kwantung) Army
- Led by expansionist officers



Japan's Manchurian Ambitions

- Why Manchuria?
- Assassination of Zhang Zuolin (1928)



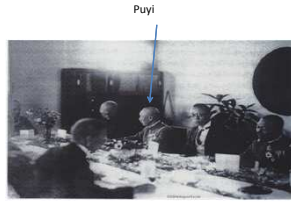
Manchukuo

- Japanese aggression and Chiang's appeasement
- Creation of a puppet state (1931)



Japanese Control of Manchukuo

- Political control by Japanese generals and officials
- Industrialization
- Social engineering



B. The Xian Incident (1936)

- KMT's appeasement policy toward Japan (why?)
- Xian Incident (1936)
- What really happened?



C. Japanese Aggression in the 1930s

- Rapid expansion of Japanese control of China
- Japanese control of seaport areas
- Japanese control of railroad networks



The Rape of Nanking

- Offensive against Nanking (12/1938)
- Atrocities
- Why?



II. DIVERGENT PATHS TO RESISTANCE

A. The Second United Front, 1937-46

- Official cease fire
- Partnership btw the CCP and KMT?
- Return of Stalinist interventions



B. Military Struggles of the KMT

- Divided and poorly trained forces
- Passive resistance
- Limited foreign aids



The Decline of the KMT

- Loss of traditional base of support to Japan
- Settlement in new base (1937)
- Failure to mobilize popular support
- City of Heroes?



D. Anti-Japanese Resistance by the CCP

- CCP controlled two military forces (1937)
- Limited success against the Japanese forces
- Fighting in guerilla zones



The Self-Strengthening of the CCP

- Social revolutions in the villages
- Rectification campaigns